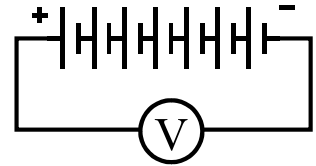


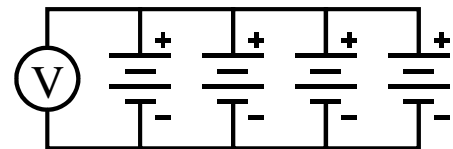
Quiz 12:1C DC Circuits – Ammeters & Voltmeters [A-D]

Each of the cells on this quiz has an individual EMF of 1.50 Volts.

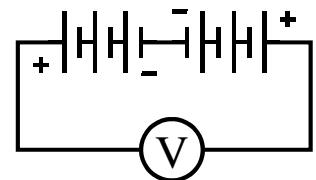
1. A battery is assembled as shown to the right. What will be the reading on a voltmeter connected across this battery? Explain! [3 pts]



2. A battery is assembled as shown to the right. What will be the reading on a voltmeter connected across this battery? Explain! [3 pts]

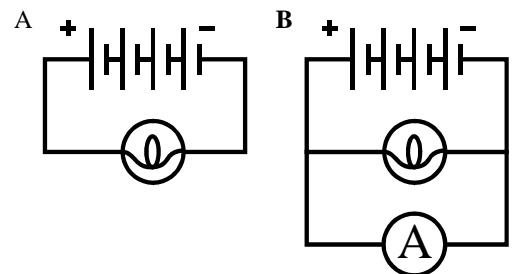


3. A battery is assembled as shown to the right. What will be the reading on a voltmeter connected across this battery? Explain! [3 pts]



A light bulb is connected to a four-cell battery as shown below in diagram A. As a result the light bulb shines brightly. An ammeter is then added in parallel with the light bulb as shown in diagram B.

4. What effect, if any, will the addition of the ammeter have on the light bulb? Explain! [3 pts]



5. Is this ammeter being used correctly? Explain! [3 pts]
